



Connectors > Power Connectors > Circular Power > Circular Power Connectors



Connector Product Type: **Housing**
Operating Voltage: **600 VDC**
Connector System: **Wire-to-Panel**
Number of Positions: **7**
Sealable: **No**

Features

Product Type Features

Connector Product Type	Housing
Connector System	Wire-to-Panel
Sealable	No
Connector & Contact Terminates To	Wire & Cable
Connector & Housing Type	Receptacle
Circular Connector Shell Type	All Plastic

Configuration Features

Reverse Numbering	Without
Number of Positions	7
Number of Power Positions	7
Number of Signal Positions	0

Electrical Characteristics

Operating Voltage	600 VAC
-------------------	---------

Contact Features



Reverse Gender	No
Contact Type	Pin
Contact Current Rating (Max)	32 A
Contact Protection	With

Termination Features

Termination Method to Wire & Cable	Crimp
------------------------------------	-------

Mechanical Attachment

Mating Retention Type	Threaded Coupling
Thread Size	1-3/8 - 18 UNEF-2A
Panel Mount Feature Type	Flange with Mounting Holes
Mating Alignment Type	Keyed
Mating Alignment	With
Connector Mounting Type	Panel Mount
Mating Retention	With
Panel Mount Feature	Without

Housing Features

Body Orientation	Straight
Housing Color	Black
Housing Material	Nylon
Circular Connector Shell Size	23

Dimensions

Compatible Insulation Diameter Range	5.59 mm[.22 in]
--------------------------------------	-----------------

Usage Conditions

Operating Temperature Range	-55 – 105 °C[-67 – 221 °F]
Fluid Resistance	None

Operation/Application

Circuit Application	Power
Shielded	No

Industry Standards

UL Flammability Rating	UL 94V-0
------------------------	----------

Packaging Features

--	--



Packaging Quantity	1
Packaging Method	Package

Product Compliance

For compliance documentation, visit the product page on TE.com>

EU RoHS Directive 2011/65/EU	Compliant
EU ELV Directive 2000/53/EC	Compliant
China RoHS 2 Directive MIIT Order No 32, 2016	No Restricted Materials Above Threshold
EU REACH Regulation (EC) No. 1907/2006	Current ECHA Candidate List: JAN 2025 (247) Candidate List Declared Against: JAN 2025 (247) Does not contain REACH SVHC
Halogen Content	BFR/CFR/PVC Free, but Br/Cl >900 ppm in other sources.
Solder Process Capability	Not applicable for solder process capability

Product Compliance Disclaimer

This information is provided based on reasonable inquiry of our suppliers and represents our current actual knowledge based on the information they provided. This information is subject to change. The part numbers that TE has identified as EU RoHS compliant have a maximum concentration of 0.1% by weight in homogenous materials for lead, hexavalent chromium, mercury, PBB, PBDE, DBP, BBP, DEHP, DIBP, and 0.01% for cadmium, or qualify for an exemption to these limits as defined in the Annexes of Directive 2011/65/EU (RoHS2). Finished electrical and electronic equipment products will be CE marked as required by Directive 2011/65/EU. Components may not be CE marked. Additionally, the part numbers that TE has identified as EU ELV compliant have a maximum concentration of 0.1% by weight in homogenous materials for lead, hexavalent chromium, and mercury, and 0.01% for cadmium, or qualify for an exemption to these limits as defined in the Annexes of Directive 2000/53/EC (ELV). Regarding the REACH Regulation, the information TE provides on SVHC in articles for this part number is based on the latest European Chemicals Agency (ECHA) 'Guidance on requirements for substances in articles' posted at this URL: <https://echa.europa.eu/guidance-documents/guidance-on-reach>

Compatible Parts



TE Part # 6-2407269-4
CAP, CPC, SIZE 23 RECP, YELLOW



TE Part # 6-2407269-3
CAP, CPC, SIZE 23 RECP, RED



TE Part # 206512-6
LARGE CABLE CLAMP KIT,BULK PKG



TE Part # 207299-4
FLANGE PLUG



TE Part # 206136-3
CPC PLUG ASSEMBLY SIZE 23-7



TE Part # 7-1579008-6
UNLOCKING TOOL



TE Part # 796382-2
R/A STRN RELIEF KIT,SZ 23,CPC




TE Part # 206512-5
CLAMP,CABLE SHELL,SIZE 23



TE Part # 1-206138-0
CABLE CLAMP ASSY,BULK PACKED



TE Part # 1546350-2
R/A CABLE CLAMP KIT,SZ 23,CPC



TE Part # 207597-1
PLUG, TYPE XII KEYING



TE Part # 206138-8
CLAMP CBL SHELL SIZE 23



TE Part # 207774-4
CABLE CLAMP ASY,SZ 23,BULK PKG



TE Part # 207055-1
EXTENDER BACK SHELL



TE Part # 213812-1
COUPLING RING,SZ 23,CPC



TE Part # 6-2407269-2
CAP, CPC, SIZE 23 RECP, BLACK



TE Part # 6-2407269-1
CAP, CPC, SIZE 23 RECP, ORANGE




TE Part # 206136-1
CPC PLUG ASSEMBLY SIZE 23-7




TE Part # 207774-3
CLAMP CABLE SHELL,SIZE 23


Also in the Series | **AMP Circular Plastic Connectors**



Circular Connector Backshells & Clamps(1)



Circular Power Connectors(16)



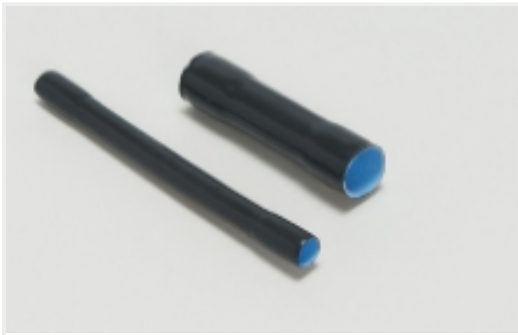
Connector Contacts(6)



Connector Hardware(10)

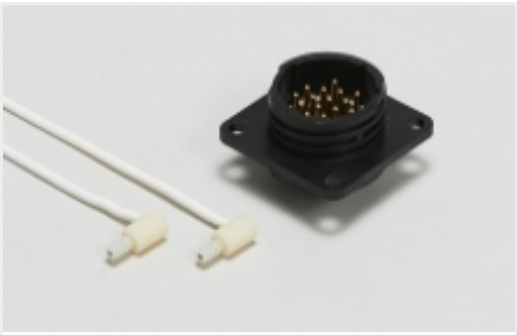


Power Contacts(6)



Sealing Sleeves(2)

Also in the Series | Circular Plastic Connectors Series 3



Circular Power Connectors(16)

Customers Also Bought



TE Part #T1750162129-000
H16B-TBFH-PG29



TE Part #66261-1
MALE CONTACT ASSY. (LP.)



TE Part #2-66740-1
TYPE XII FEMALE CONT (LP)



TE Part #9-146274-0
40 MODII HDR SRST B/A .100CL



TE Part #206136-1
CPC PLUG ASSEMBLY SIZE 23-7



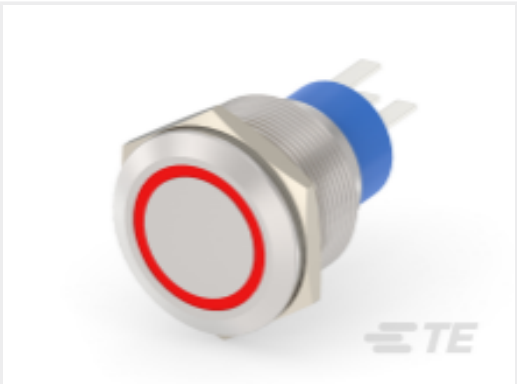
TE Part #206227-1
23-7 RECEPT REV SEX



TE Part #208482-1
CMC PLUG ASSEMBLY,SZ 28



TE Part #208483-1
CMC RECEPTACLE ASSY,SIZE 28



TE Part #2213772-5
AV22 SPM 3A MOVE RING LED RED 12V



TE Part #348794-4
SHORTING CONN TAB HOUSING (BRIG)



Documents

Product Drawings

23-7 RECEPT STD SEX

English

CAD Files

3D PDF

3D

Customer View Model

ENG_CVM_CVM_206137-1_AE.2d_dxf.zip

English

Customer View Model

ENG_CVM_CVM_206137-1_AE.3d_igs.zip

English

Customer View Model

ENG_CVM_CVM_206137-1_AE.3d_stp.zip

English

By downloading the CAD file I accept and agree to the [Terms and Conditions](#) of use.

Datasheets & Catalog Pages

AMP Circular Connectors for Commercial Signal & Power Applications

English

Product Specifications

Product Specification

English

Connector, Circular Plastic

English

Product Specification

English

Instruction Sheets

Instruction Sheet (U.S.)

English

Agency Approvals

CSA Certificate

English

CSA Certificate

English