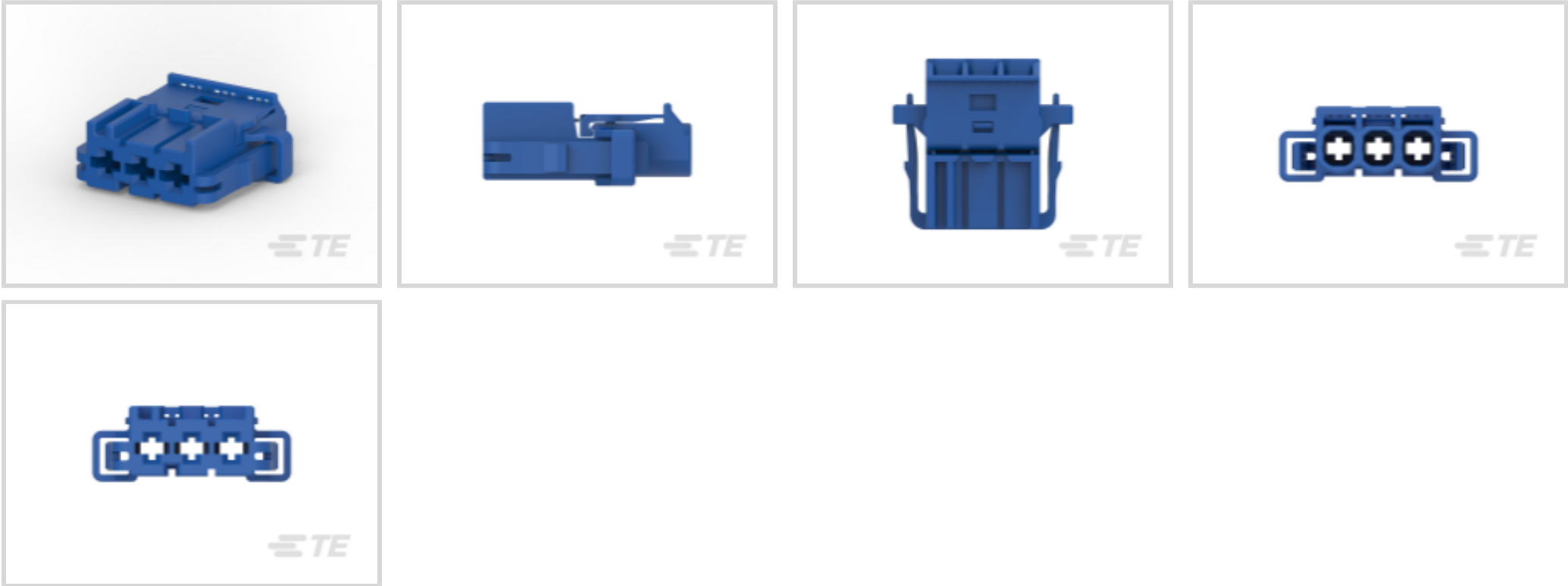




Automotive Parts > Automotive Connectors > Automotive Housings > AMP Unsealed Connector Housing



Connector & Housing Type: **Housing for Female Terminals**

Number of Positions: **3**

Sealable: **No**

Operating Temperature Range: **-40 – 120 °C [-40 – 248 °F]**

Number of Rows: **1**

[All AMP Unsealed Connector Housing \(109\)](#)

Features

Product Type Features

Mixed & Hybrid Connector	No
Connector Shape	Rectangular
Connector & Housing Type	Housing for Female Terminals
Sealable	No
Primary Locking Feature	Integrated in Housing
Connector System	Wire-to-Wire
Connector & Contact Terminates To	Wire & Cable

Configuration Features

Number of Positions	3
Number of Rows	1

Electrical Characteristics

Operating Voltage	28 VDC
-------------------	--------

Body Features



Cable Exit Angle	180°
Primary Product Color	Blue
Connector & Keying Code	C

Contact Features

Contact Size	2.8mm
Contact Type	Receptacle
Mating Tab Width	2.8 mm[.11 in]
Contact Current Rating (Max)	44 A

Mechanical Attachment

Strain Relief	Without
Terminal Position Assurance	No
Mating Alignment Type	Keyed
Mating Alignment	With
Connector Mounting Type	Cable Mount (Free-Hanging)

Housing Features

Housing Material	PA 66 GF13
Centerline (Pitch)	5.5 mm[.217 in]

Dimensions

Product Width	26 mm[1.02 in]
Product Length	27.5 mm[1.082 in]
Connector Height	9.7 mm[.382 in]

Usage Conditions

Operating Temperature Range	-40 – 120 °C[-40 – 248 °F]
Operating Temperature (Max)	120 °C[248 °F]

Operation/Application

Circuit Application	Power
---------------------	-------

Industry Standards

IP Rating	IP30
UL Flammability Rating	UL 94HB

Packaging Features

Packaging Method	Carton
Packaging Quantity	1000



Other

Serviceable	Yes
Connector Position Assurance Capable	No

Product Compliance

For compliance documentation, visit the product page on TE.com>

EU RoHS Directive 2011/65/EU	Compliant
EU ELV Directive 2000/53/EC	Compliant
China RoHS 2 Directive MIIT Order No 32, 2016	No Restricted Materials Above Threshold
EU REACH Regulation (EC) No. 1907/2006	Current ECHA Candidate List: JAN 2025 (247) Candidate List Declared Against: JAN 2025 (247) Does not contain REACH SVHC
Halogen Content	Low Halogen - Br, Cl, F, I < 900 ppm per homogenous material. Also BFR/CFR/PVC Free
Solder Process Capability	Not applicable for solder process capability

Product Compliance Disclaimer

This information is provided based on reasonable inquiry of our suppliers and represents our current actual knowledge based on the information they provided. This information is subject to change. The part numbers that TE has identified as EU RoHS compliant have a maximum concentration of 0.1% by weight in homogenous materials for lead, hexavalent chromium, mercury, PBB, PBDE, DBP, BBP, DEHP, DIBP, and 0.01% for cadmium, or qualify for an exemption to these limits as defined in the Annexes of Directive 2011/65/EU (RoHS2). Finished electrical and electronic equipment products will be CE marked as required by Directive 2011/65/EU. Components may not be CE marked. Additionally, the part numbers that TE has identified as EU ELV compliant have a maximum concentration of 0.1% by weight in homogenous materials for lead, hexavalent chromium, and mercury, and 0.01% for cadmium, or qualify for an exemption to these limits as defined in the Annexes of Directive 2000/53/EC (ELV). Regarding the REACH Regulation, the information TE provides on SVHC in articles for this part number is based on the latest European Chemicals Agency (ECHA) 'Guidance on requirements for substances in articles' posted at this URL: <https://echa.europa.eu/guidance-documents/guidance-on-reach>

Compatible Parts



TE Part # CAT-AM705-T273
AMP MCP, RECEPTACLE AND TAB



TE Part # 828905-1
SINGLE-WIRE-SEAL(5MM HOLE)



TE Part # CAT-AM705-CH8173
AMP Unsealed Connector Housing

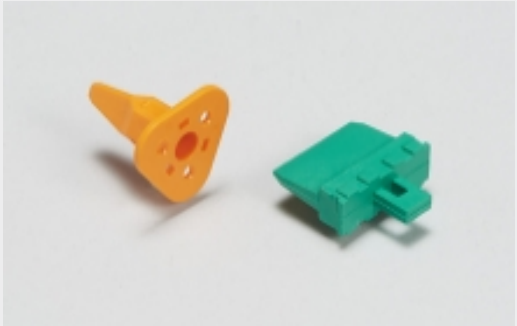


TE Part # 2-968977-9
2,8MM FLA-STE-GEH3P



TE Part # 828922-1
2,5MM CAVITY PLUG FOR 5,4MM DI

Also in the Series | AMP MCP 2.8



Automotive Connector Locks & Position Assurance(4)



Automotive Housings(257)



Automotive Seals & Cavity Plugs(6)



Connector Seals & Cavity Plugs(6)



Module Components(1)

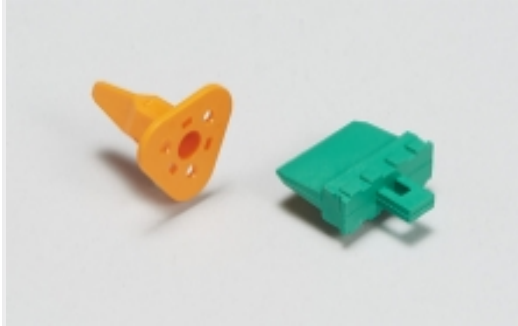


Other Automotive Connector Accessories(3)

Also in the Series | AMP MCP Connector System



Automotive Connector Caps & Covers (25)



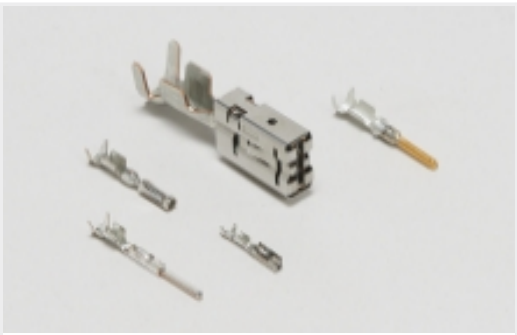
Automotive Connector Locks & Position Assurance(4)



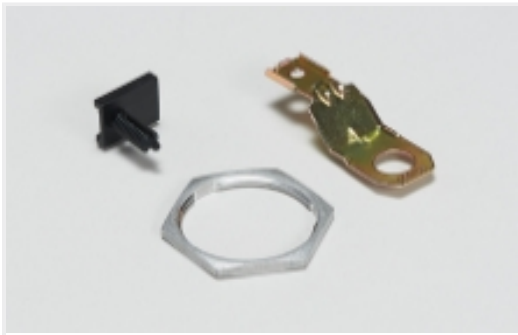
Automotive Housings(257)



Automotive Seals & Cavity Plugs(6)



[Automotive Terminals\(7\)](#)



[Other Automotive Connector Accessories\(3\)](#)

Customers Also Bought



TE Part #DT12S-BT
[BOOT, 12P, PLG, ST, GRY](#)



TE Part #CAT-T4827-CH8172
[Timer Connector Housing](#)



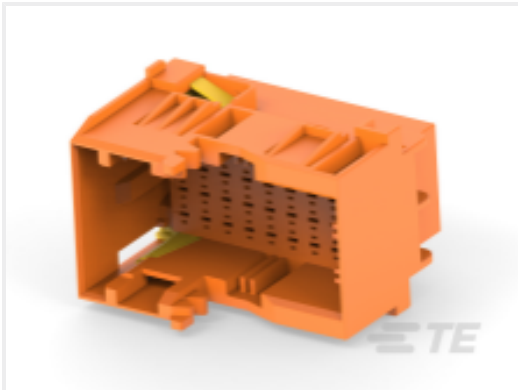
TE Part #1-968851-3
[AMP MCP 2.8, CONTACT](#)



TE Part #CAT-AM705-CH8173
[AMP Unsealed Connector Housing](#)



TE Part #1-968976-9
[MCP2.8 BU-GEH 3P](#)



TE Part #1-2112891-6
[36POS,TAB 1.5X0.6,TAB HSG,ASSY](#)

Documents

Product Drawings

[MCP2.8 BU-GEH 3P](#)

English

CAD Files

[3D PDF](#)

3D

Customer View Model

[ENG_CVM_CVM_3-968976-9_B.2d_dxf.zip](#)

English

Customer View Model

[ENG_CVM_CVM_3-968976-9_B.3d_igs.zip](#)

English

Customer View Model

[ENG_CVM_CVM_3-968976-9_B.3d_stp.zip](#)

English

By downloading the CAD file I accept and agree to the [Terms and Conditions](#) of use.



Product Specifications

HOUSINGS FOR AMP MCP2.8 CONTACT, UNSEALED

English

Application Specification

English