

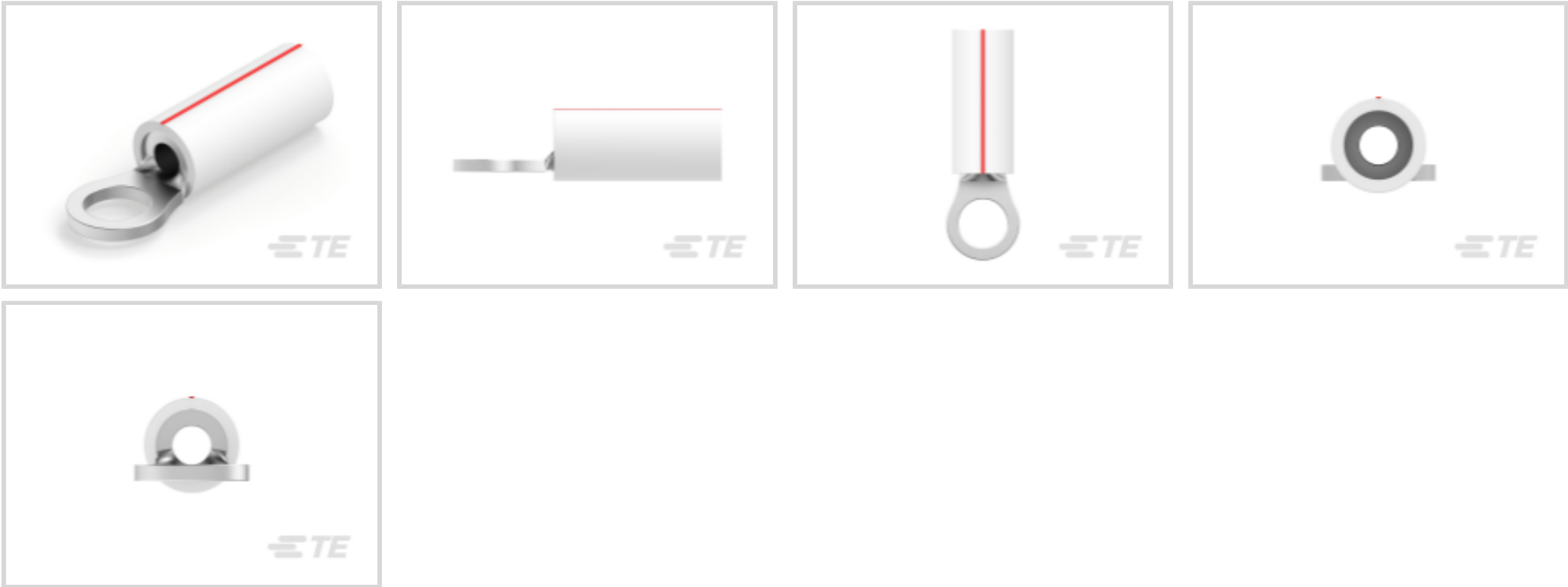


PIDG

TE Internal #: 696422-3
Closed Ring Tongue Terminal, 22 – 16 AWG, #6 / M3.5 Stud, 3.68 mm [.145 in] Stud Diameter, Closed Barrel, Straight, Tin Plating, PIDG

[View on TE.com >](#)

Terminals & Splices > Ring Terminals



Ring Terminal Product Type: Closed Ring Tongue Terminal

Wire Size: 509 – 3260 CMA

Stud Size: #6, M3.5

Features

Product Type Features

Terminal Features	Sheared
Ring Terminal Product Type	Closed Ring Tongue Terminal
Stud Size	#6, M3.5
Sealable	No
Wire Insulation Support Retention Type	Insulation Support

Configuration Features

Number of Holes	1
-----------------	---

Body Features

Product Weight	.765 g
Insulation Sleeve Color	Natural
Stripe Color	Red

Contact Features

Barrel Type	Closed
Terminal Orientation	Straight
Terminal Plating Material	Tin



Mechanical Attachment

Wire Insulation Support	With
-------------------------	------

Dimensions

	.08 in
Wire Size	509 – 3260 CMA
Stud Diameter	3.68 mm[.145 in]
Tongue Thickness	.79 mm[.031 in]
Product Length	17.2 mm[.677 in]
Compatible Insulation Diameter (Max)	3.18 mm[.125 in]
Compatible Insulation Diameter Range	2.03 – 3.18 mm[.08 – .125 in]

Usage Conditions

Insulation Option	Partially Insulated
-------------------	---------------------

Operation/Application

Compatible With Wire Base Material	Copper
Compatible With Wire Plating Material	Tin

Industry Standards

Government Qualified Terminal	No
-------------------------------	----

Packaging Features

Packaging Quantity	1000
Packaging Method	Loose Piece

Product Compliance

For compliance documentation, visit the product page on TE.com>

EU RoHS Directive 2011/65/EU	Compliant
EU ELV Directive 2000/53/EC	Compliant
China RoHS 2 Directive MIIT Order No 32, 2016	No Restricted Materials Above Threshold
EU REACH Regulation (EC) No. 1907/2006	Current ECHA Candidate List: JAN 2025 (247) Candidate List Declared Against: JAN 2025 (247) Does not contain REACH SVHC
Halogen Content	Not Low Halogen - contains Br or Cl > 900 ppm.
Solder Process Capability	Not applicable for solder process capability



Product Compliance Disclaimer

This information is provided based on reasonable inquiry of our suppliers and represents our current actual knowledge based on the information they provided. This information is subject to change. The part numbers that TE has identified as EU RoHS compliant have a maximum concentration of 0.1% by weight in homogenous materials for lead, hexavalent chromium, mercury, PBB, PBDE, DBP, BBP, DEHP, DIBP, and 0.01% for cadmium, or qualify for an exemption to these limits as defined in the Annexes of Directive 2011/65/EU (RoHS2). Finished electrical and electronic equipment products will be CE marked as required by Directive 2011/65/EU. Components may not be CE marked. Additionally, the part numbers that TE has identified as EU ELV compliant have a maximum concentration of 0.1% by weight in homogenous materials for lead, hexavalent chromium, and mercury, and 0.01% for cadmium, or qualify for an exemption to these limits as defined in the Annexes of Directive 2000/53/EC (ELV). Regarding the REACH Regulation, the information TE provides on SVHC in articles for this part number is based on the latest European Chemicals Agency (ECHA) 'Guidance on requirements for substances in articles' posted at this URL: <https://echa.europa.eu/guidance-documents/guidance-on-reach>

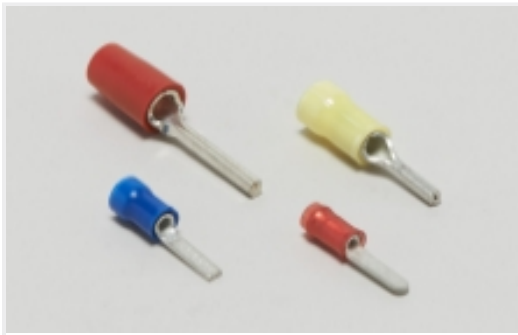
Compatible Parts

TE Part # 169400 CERTI-LOK FRAME W/O DIES	TE Part # 59250 T-HEAD PIDG 26-14 ASSY	TE Part # 47806-2 DIES PIDG 22-16 DIE SET	TE Part # 47386 DAHT PG PIDG 26-16 ASSY
TE Part # 58423-1 DIE, RBY IS9252	TE Part # 58433-3 PRO CR ASSY, RBY IS9252	TE Part # 539691-2 ERGO DIE R.B.Y	TE Part # 2063030-1 SDE DIESET, RBY, UL
TE Part # 169404 CERTI-LOK DIE	TE Part # 59824-1 TETRA-CRIMP PIDG PG FASTON 22-10 ASSY	TE Part # 59300 T-HEAD PIDG PG 26-16 ASSY	

Also in the Series | PIDG



Compression Connectors(17)



Crimp Wire Pins, Tabs & Ferrules(41)



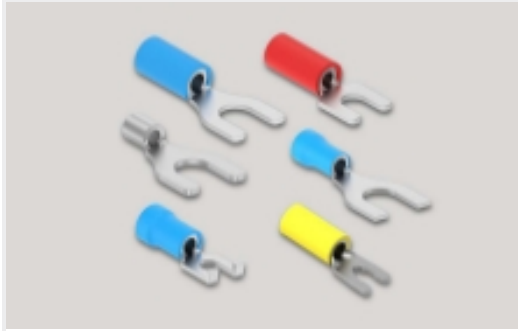
Knife Disconnects(11)



Quick Disconnects(38)



Ring Terminals(589)



Spade Terminals(228)



Special Purpose Terminals(1)



Splices(41)

Customers Also Bought



TE Part #YDTS26F15-35PAV001
PLUG ASSY



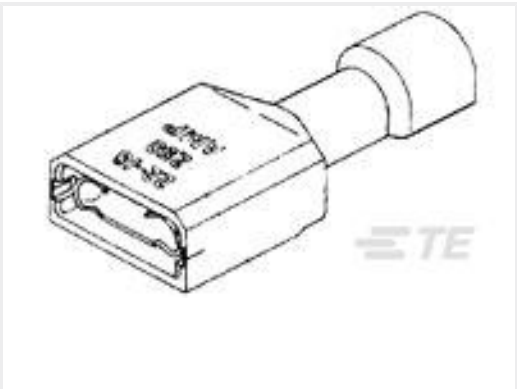
TE Part #2-34107-2
SOLIS R 22-16 COMM 22-18 MIL 6



TE Part #280393-2
2X22P MODU II SHRD HDR,RT ANG, AU



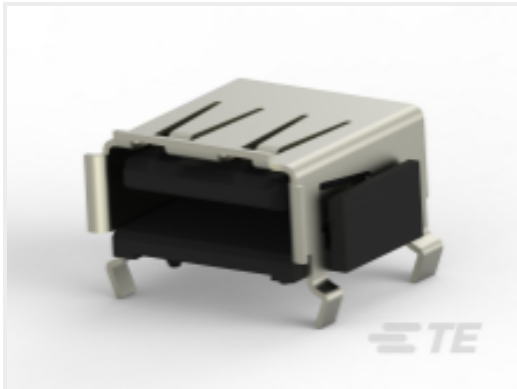
TE Part #459581-8
BLADE, SLUG



TE Part #2-520184-2
ULTRAFast 250 ASSY REC 22-18 TPBR LP



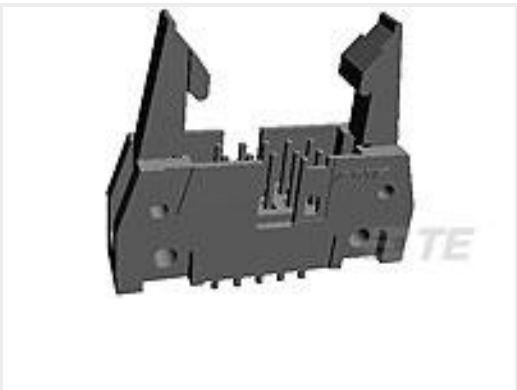
TE Part #3-582118-9
TEST PROBE REC130 BI WHT GPBR



TE Part #1674459-4
Std USB Type A, R/A,T/H, Natural, HighDur



TE Part #5227699-3
BNC PCB VERTICAL



TE Part #5499910-5
A/L UNIV HDR 24P VERT SHT LAT



TE Part #6609065-1
1EDP=F7687 S0

Documents



Product Drawings

PIDG PVF2 R 22-16COM22-18MIL 6

English

CAD Files

3D PDF

3D

Customer View Model

ENG_CVM_CVM_696422-3_A.2d_dxf.zip

English

Customer View Model

ENG_CVM_CVM_696422-3_A.3d_igs.zip

English

Customer View Model

ENG_CVM_CVM_696422-3_A.3d_stp.zip

English

By downloading the CAD file I accept and agree to the [Terms and Conditions](#) of use.