



Connectors > Connector Accessories > Connector Seals & Cavity Plugs



Connector Seal & Plug Type: **Single Wire Seal (SWS)**

Cavity Diameter: **5.2 mm [.205 in]**

Operating Temperature Range: **-40 – 130 °C [-40 – 266 °F]**

Primary Product Color: **Blue**

Primary Product Material: **Silicone**

Features

Product Type Features

Connector Seal & Plug Type	Single Wire Seal (SWS)
----------------------------	------------------------

Body Features

Primary Product Color	Blue
Primary Product Material	Silicone

Dimensions

Cavity Diameter	5.2 mm[.205 in]
Compatible Insulation Diameter Range	2.1 mm[.083 in]

Usage Conditions

Operating Temperature Range	-40 – 130 °C[-40 – 266 °F]
Operating Temperature (Max)	130 °C[266 °F]

Other

Resistance to Hydrocarbons	Poor
Shore A Hardness	50
Contains Lubricant	Yes



Product Compliance

For compliance documentation, visit the product page on TE.com>

EU RoHS Directive 2011/65/EU	Compliant
EU ELV Directive 2000/53/EC	Compliant
China RoHS 2 Directive MIIT Order No 32, 2016	No Restricted Materials Above Threshold
EU REACH Regulation (EC) No. 1907/2006	Current ECHA Candidate List: JAN 2025 (247) Candidate List Declared Against: JAN 2025 (247) Does not contain REACH SVHC
Halogen Content	Low Halogen - Br, Cl, F, I < 900 ppm per homogenous material. Also BFR/CFR/PVC Free
Solder Process Capability	Not applicable for solder process capability

Product Compliance Disclaimer

This information is provided based on reasonable inquiry of our suppliers and represents our current actual knowledge based on the information they provided. This information is subject to change. The part numbers that TE has identified as EU RoHS compliant have a maximum concentration of 0.1% by weight in homogenous materials for lead, hexavalent chromium, mercury, PBB, PBDE, DBP, BBP, DEHP, DIBP, and 0.01% for cadmium, or qualify for an exemption to these limits as defined in the Annexes of Directive 2011/65/EU (RoHS2). Finished electrical and electronic equipment products will be CE marked as required by Directive 2011/65/EU. Components may not be CE marked. Additionally, the part numbers that TE has identified as EU ELV compliant have a maximum concentration of 0.1% by weight in homogenous materials for lead, hexavalent chromium, and mercury, and 0.01% for cadmium, or qualify for an exemption to these limits as defined in the Annexes of Directive 2000/53/EC (ELV). Regarding the REACH Regulation, the information TE provides on SVHC in articles for this part number is based on the latest European Chemicals Agency (ECHA) ‘Guidance on requirements for substances in articles’ posted at this URL: <https://echa.europa.eu/guidance-documents/guidance-on-reach>

Compatible Parts



TE Part # 368354-3
JPT 2P ASSY FOR CLIP GREEN



TE Part # 5-1564285-0
58POS, MIXED,REC HSG,ASSY



TE Part # 4-1564285-4
58POS, MIXED,REC HSG,ASSY



TE Part # 9-1452415-2
58 POS MIXED, MCON CONNECTOR



TE Part # 3-1564285-2
58POS, MIXED,REC HSG,ASSY



TE Part # 4-1563172-4
58POS, MIXED,REC HSG,ASSY



TE Part # 5-1563172-4
58POS, MIXED,REC HSG,ASSY



TE Part # 7-1564285-6
58POS, MIXED,REC HSG,ASSY




TE Part # 2050049-1
3POS 2.8MM SENSOR PLUG ASSY



TE Part # 282648-1
SPLASH PROOF CONN. W.S.L.2 WAY



TE Part # 282788-3
SPLASH-PROOF CONN W.S.L. 2P TY



TE Part # CAT-L489-CH8172
LEAVYSEAL Connector Housings



TE Part # 9-1452415-1
58 POS MIXED, MCON CONNECTOR



TE Part # 2318967-1
24POS,AMP MCP 2.8,REC HSG ASSY, SLD



TE Part # 5-1564285-2
58POS, MIXED,REC HSG,ASSY



TE Part # 1-1743059-2
MT-2/JPT SLD 36P PLUG ASSY BLK



TE Part # 1-1718624-2
2 POS HSG AMP MCP 2.8 ASSY



TE Part # 1-2005388-3
JPT SLD 2P PLUG ASSY-2 GRY



TE Part # CAT-AM705-T273
AMP MCP, RECEPTACLE AND TAB




TE Part # CAT-N10-RC4828
48V Ready 2.8mm Sealed Connectors

Also in the Series | **Timer Connector System**




Automotive Connector Locks & Position Assurance(15)



Automotive Housings(188)



Automotive Seals & Cavity Plugs(32)



Connector Seals & Cavity Plugs(32)



Crimp Terminal Housings(13)



Other Automotive Connector Accessories(1)

Customers Also Bought



TE Part #CAT-R7602-T273
ROUND CONNECTOR SYSTEM, PIN AND SOCKET



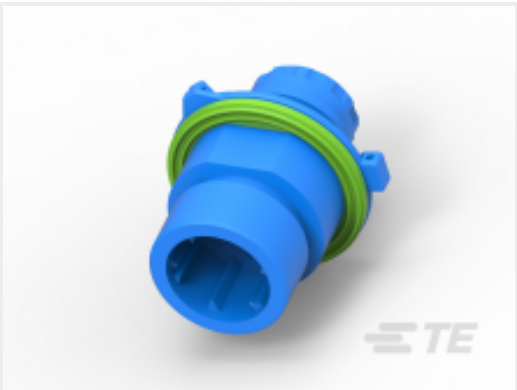
TE Part #1-962915-1
TAB 2.8x0.8 CONTACT CS SWS Sn



TE Part #963530-1
EINZELLEITERDICHUNG



TE Part #963531-1
BLINDSTOPFEN



TE Part #CAT-C4962-CH8172
Circular DIN Housings



TE Part #CAT-AM705-T273
AMP MCP, RECEPTACLE AND TAB

Documents

Product Drawings

SINGLE WIRE SEAL FOR J.P.T.CON

English

SINGLE WIRE SEAL FOR J.P.T.CON

English

SINGLE WIRE SEAL FOR J.P.T.CON

English

CAD Files

Customer View Model

ENG_CVM_CVM_828904-1_M.2d_dxf.zip

English

3D PDF

3D

Customer View Model

ENG_CVM_CVM_828904-1_M.3d_igs.zip

English



Customer View Model

[ENG_CVM_CVM_828904-1_M.3d_stp.zip](#)

English

By downloading the CAD file I accept and agree to the [Terms and Conditions](#) of use.

Datasheets & Catalog Pages

[HDSCS Catalog](#)

English

[CONNECTOR SELECTOR](#)

English

Product Specifications

[Application Specification](#)

English

[APPLICATION SPECIFICATION FOR JUNION POWER TIMER CONTACT FOR SINGLE WIRE SEALING](#)

English

Instruction Sheets

[Instruction Sheet \(U.S.\)](#)

English