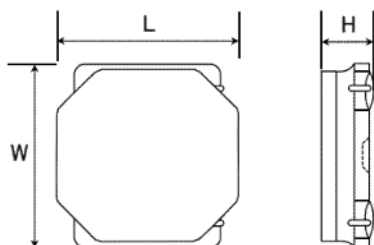


# Spec Sheet

SMD Power Inductors for Automotive / Industrial Applications (NR series H type / V type / S type)

## NRS5040T220MMGKV



### ■ Features

- Item Summary  
22  $\mu$ H( $\pm 20\%$ ), 1500mA, 1400mA
- Lifecycle Stage  
Mass Production
- AEC-Q200 qualified
- Standard packaging quantity (minimum)  
Taping 1500pcs

### ■ Products characteristics table

CaseSize (EIA/JIS)	~/5050
Inductance	22 $\mu$ H( $\pm 20\%$ )
Inductance Measuring Frequency	100kHz
Rated Current -Saturation Current	1500mA
Rated Current -Temperature Rise Current	1400mA
DC Resistance (max)	0.1638 $\Omega$
Avg. of DC Resistance	0.126 $\Omega$
Self-resonant Frequency (min)	9MHz
RoHS Compliance	Yes
Halogen Free	Yes
Soldering Method	Reflow

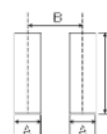
### ■ External Dimensions

L	4.9mm $\pm 0.2$
W	4.9mm $\pm 0.2$
H	4mm max

### ■ Recommended Land Patterns

【推奨ランドパターン】  
実装上の注意  
・実装は必ず300℃以上で実施してください。  
・本製品は必ず正しい向きで実装してください。

【Recommended Land Pattern】  
Surface Mounting  
・Mounting and soldering conditions should be checked beforehand.  
・Applicable soldering process is reflow soldering only.



Type	A	B	C
NRS5040T	1.5	3.6	4
NRS5040T2			
NRS5040T4			
NRS5040T20			
NRS5040T24			
NRS5040T30			
NRS5040T36			
NRS5040T40			

unit:mm

The data is reference only. Electrical characteristics vary depending on environment or measurement condition.  
TAIYO YUDEN reserves the right to make change to the Date at any time without notice.  
Before making final selection, please check product specification.

2015.03.06